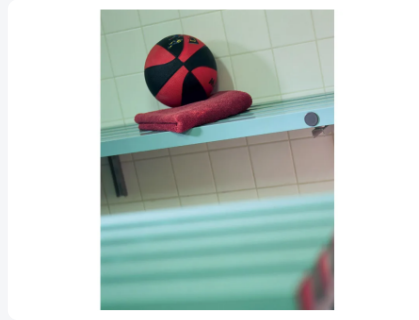


Article number: KRGBD



Double wardrobe setup



Product specifications

| | |
|-------------------|----------------------|
| Uitwendig (LxBxH) | 2000 x 850 x 1800 mm |
| Material | PVC |
| Article number | KRGBD |
| Temperature range | -40°C to +80°C |
| Color | Green |

Properties

The seat part forms a single unit and consists of nine longitudinal tubes with 25 mm spacing for comfortable seating, the top shelf is 300 mm deep for storage of bags etc.

Free space below: 400 mm

Description

Plastic cloakroom bench / changing room bench (2000 x 850 x H 1800 mm) - double arrangement, equipped with construction with 8 double hooks, suitable for wet areas. Ideal for efficient and corrosion-free furnishing of changing rooms. Other sizes and configurations available on request. The load capacity of the cloakroom bench is 200 kg per linear meter.

