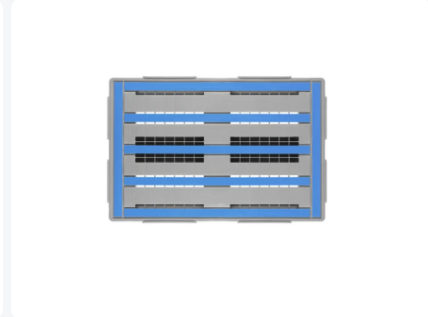
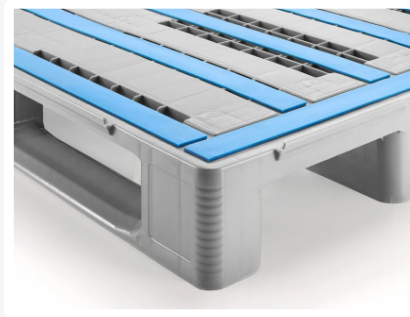


Artikelnummer: 83241851

Bedrukking mogelijk



# Euro pallet - L1 - 1200 x 800 mm - with rims - closed runners



## Product specifications

Weight (kg)	20 kg
External dimensions ( L x W x H)	1200 x 800 x 150 mm
Temperature range	-30°C to +40°C, briefly up to +90°C
Color	Grey
Material	HDPE
Static load capacity	7500 kg
Edge height	7 mm
Dynamic load capacity	1250 kg
Load capacity in racks	1250 kg

## Properties

The L1's anti-slip strips prevent loads sliding off and mutual sliding of empty pallets

L1 with three runners lengthwise, underside of chocks and runners open (ribbed)

## Description

Heavy duty Europallet type L1 (1200 x 800 x H 150 mm) - suitable for food contact, with reinforcement profiles for extremely high load capacity. Perfect pallet for trouble-free use in automatic pallet shuttle systems, transportation on roller and chain conveyors, robotic applications, and machine loading and pallet wrapping. Equipped with 3 longitudinal pallet runners, closed bottom runners (without anti-slip). With raised edges all around, featuring 7 anti-slip strips on the pallet deck and 5 integrated reinforcement profiles in the top deck, 3 longitudinal and 2 transverse. Static load capacity is 7500 kg, dynamic load capacity 1250 kg, and in pallet racks 1250 kg! Pallets from the L-series are very stable, highly impact-resistant, and extremely durable. They provide high traction on roller conveyors and exhibit minimal deflection, even under heavy loads.



Alternatieve artikelen

