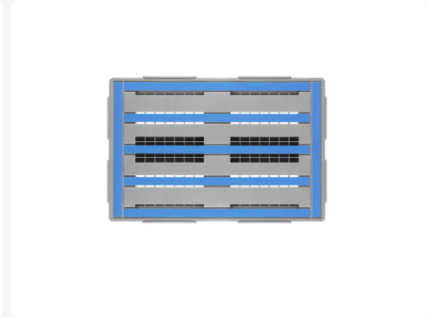
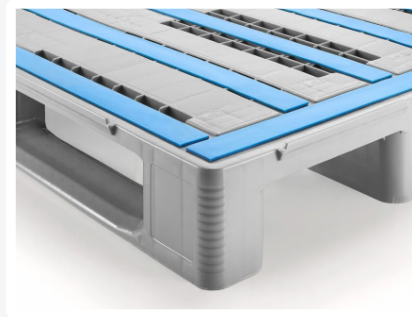


Article number: 83241851

Bedrukking mogelijk



Euro pallet - L1 - 1200 x 800 mm - with rims - closed runners



Product specifications

Uitwendig (LxBxH)	1200 x 800 x 150 mm
Dynamic load capacity	1250 kg kg
Material	HDPE
Article number	83241851
Weight (kg)	20 kg
Temperature range	-30°C to +40°C, briefly up to +90°C
Color	Grey
Static load capacity	7500 kg kg
Edge height	7 mm mm
Load capacity in racks	1250 kg

Properties

The L1's anti-slip strips prevent loads sliding off and mutual sliding of empty pallets

L1 with three runners lengthwise, underside of chocks and runners open (ribbed)

Description

Heavy duty Europallet type L1 (1200 x 800 x H 150 mm) - suitable for food contact, with reinforcement profiles for extremely high load capacity. Perfect pallet for trouble-free use in automatic pallet shuttle systems, transportation on roller and chain conveyors, robotic applications, and machine loading and pallet wrapping. Equipped with 3 longitudinal pallet runners, closed bottom runners (without anti-slip). With raised edges all around, featuring 7 anti-slip strips on the pallet deck and 5 integrated reinforcement profiles in the top deck, 3 longitudinal and 2 transverse. Static load capacity is 7500 kg, dynamic load capacity 1250 kg, and in pallet racks 1250 kg! Pallets from the L-series are very stable, highly impact-resistant, and extremely durable. They provide high traction on roller conveyors and exhibit minimal deflection, even under heavy loads.



Alternatieve artikelen

