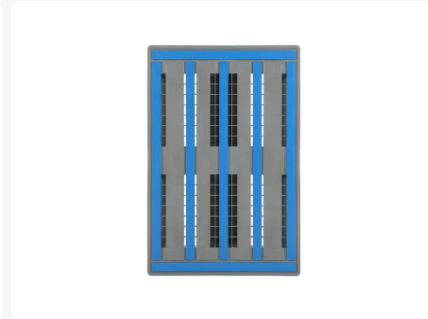
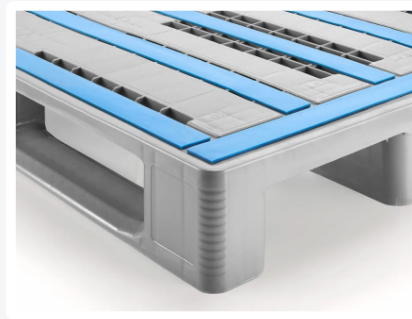


Article number: 83241850

Bedrukking mogelijk



Euro pallet - L1 - 1200 x 800 mm - without rims - closed runners



Product specifications

Uitwendig (LxBxH)	1200 x 800 x 150 mm
Dynamic load capacity	1250 kg kg
Material	HDPE
Article number	83241850
Weight (kg)	20 kg
Temperature range	-30°C to +40°C, briefly up to +90°C
Color	Grey
Static load capacity	7500 kg kg
Load capacity in racks	1250 kg

Properties

The L1's anti-slip strips prevent loads sliding off and mutual sliding of empty pallets

L1 with three runners lengthwise, underside of chocks and runners open (ribbed)

Description

Heavy-duty Euro pallet type L1 (1200 x 800 x H 150 mm) - suitable for food contact, with reinforcement profiles for extremely high load capacity. Perfect pallet for trouble-free use in automatic pallet shuttle systems, transportation on roller and chain conveyors, robotic applications, and machine loading and pallet wrapping. Equipped with 3 pallet runners longitudinally, bottom runners closed (without anti-slip). Without raised edges all around, with 7 anti-slip strips on the pallet deck and 5 integrated reinforcement profiles in the top deck, 3 longitudinally and 2 transversely. Static load capacity is 7500 kg, dynamic 1250 kg, and in pallet racking 1250 kg! Pallets from the L-series are very stable, extremely impact-resistant, and extremely durable. The pallets offer high traction on roller conveyors and show only minimal deflection; even under heavy load.



Alternatieve artikelen

