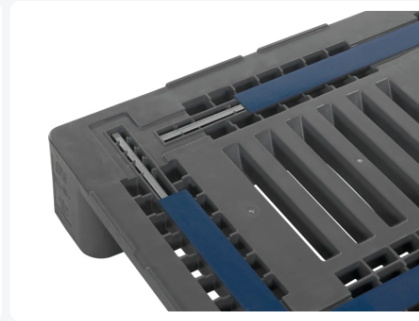




# Industrial pallet - CR3 ECO - 1200 x 1000 mm (with rims and anti-slip strips - steel reinforced)



## Product specifications

Weight (kg)	23,5 kg
External dimensions ( L x W x H)	1200 x 1000 x 160 mm
Temperature range	-30°C to +40°C, briefly up to +90°C
Color	Black
Material	Recycled ECO-HDPE
Static load capacity	5000 kg
Edge height	5 mm
Dynamic load capacity	1250 kg
Load capacity in racks	1250 kg

## Properties

The CR3's anti-slip strips prevent loads sliding off and mutual sliding of empty pallets

Raised rims around the CR3 prevent the load sliding off and mutual sliding of empty pallets

CR3 with three runners lengthwise, underside of chocks and runners open (ribbed)

CR3 is extra strong due to oblique connection between the runners and the chocks

## Description

Industrial pallet / block pallet type CR3 ECO (1200 x 1000 x H 160 mm) made from ECO-regenerated material. Equipped with 3 pallet runners lengthwise, closed bottom blocks, and open pallet runners (ribbed). With raised edges all around (5 mm), with anti-slip strips and 5 integrated reinforcement profiles in the pallet deck. Static load capacity is 5000 kg, dynamic load capacity is 1750 kg, and in pallet racks it is 1250 kg.

# Alternatieve artikelen

