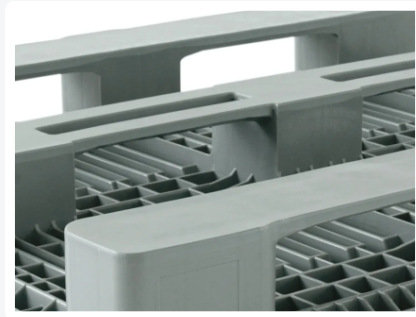




Industrial pallet - H3 - 1200 x 1000 mm (with rims - without ridges)



Product specifications

Uitwendig (LxBxH)	1200 x 1000 x 160 mm
Dynamic load capacity	1250 kg kg
Material	HDPE
Article number	83180801
Weight (kg)	22 kg
Temperature range	-30°C to +40°C, briefly up to +90°C
Color	Grey
Static load capacity	5000 kg kg
Edge height	7 mm mm
Load capacity in racks	850 kg

Properties

Raised rims around the H3 prevent the load sliding off and mutual sliding of empty pallets

H3 is extra strong due to oblique connection between the runners and the chocks

H3 with three runners lengthwise, underside of chocks and runners closed

Description

Block pallet H3 sized 1200 x 1000 mm with a height of 160 mm. Manufactured from food-grade plastic. The pallet is equipped with 3 longitudinal pallet runners and raised edges all around the pallet deck. The raised edges prevent slipping of cargo and sliding of empty pallets among each other. Both the underside of the blocks and the pallet runners are smooth and enclosed, without rib structures, preventing dirt from entering. The vulnerable pallet components are reinforced. The H3 features extra heavy-duty runners and a reinforced, angled transition from the pallet runners to the blocks, minimizing the risk of breakage. The H3 pallet is easy to clean.



Alternatieve artikelen

