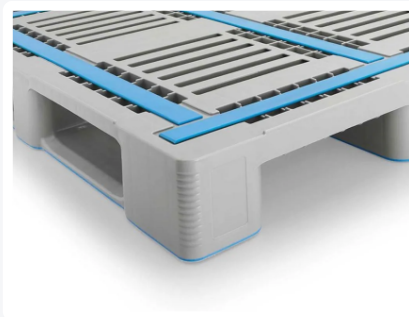
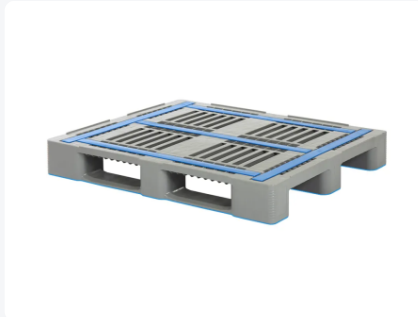




Industrial pallet - L3 - 1200 x 1000 mm - with rims - with anti-slip runners



Product specifications

Uitwendig (LxBxH)	1200 x 1000 x 160 mm
Dynamic load capacity	2000 kg kg
Material	HDPE
Article number	83341881
Weight (kg)	26 kg
Temperature range	-30°C to +40°C, briefly up to +90°C
Color	Grey
Static load capacity	7500 kg kg
Edge height	5 mm mm
Load capacity in racks	2000 kg

Properties

The L3's anti-slip strips prevent loads sliding off and mutual sliding of empty pallets.

L3 with three runners lengthwise, with antislip underneath.

Description

Heavy-duty Industrial pallet type L3 (1200 x 1000 x H 160 mm) - food-safe, with reinforcement profiles for extremely high load capacity. Perfect pallet for trouble-free use in automatic pallet shuttle systems, transport on roller and chain conveyors, robotic handling, and machine loading and wrapping of pallets. Equipped with 3 longitudinal pallet runners, bottom runners closed and provided with Palgrip anti-slip. With raised edges all around, with anti-slip strips on the pallet deck and 5 integrated reinforcement profiles in the top deck. Static load capacity is 7500 kg, dynamic 2000 kg, and in pallet racks 2000 kg. Pallets from the L-series are very stable, highly impact-resistant, and extremely durable. The pallets offer high traction on roller conveyors and exhibit only minimal deflection, even under heavy loads.



Alternatieve artikelen

