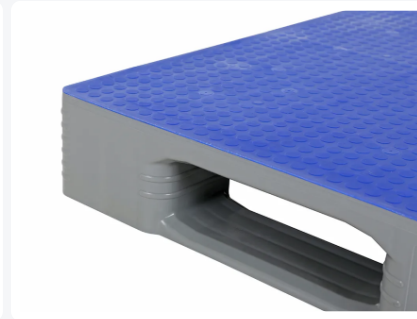
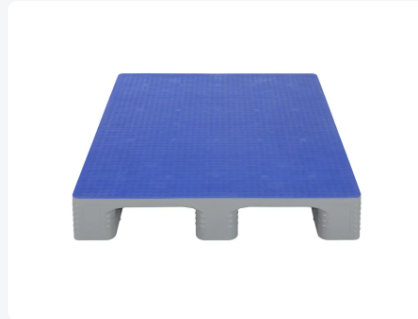
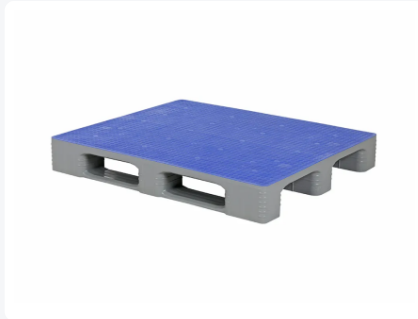


Article number: 87035899

Bedrukking mogelijk



Industrial pallet - TC3 - 1200 x 1000 mm - with anti-slip top deck - grey



Product specifications

Uitwendig (LxBxH)	1200 x 1000 x 160 mm
Dynamic load capacity	1500 kg kg
Material	HDPE
Article number	87035899
Weight (kg)	23 kg
Temperature range	From -30°C to +40°C, briefly up to +90°C
Color	Grey
Static load capacity	7500 kg kg
Load capacity in racks	11250 kg
Surface	Closed

Properties

The special Palgrip anti-slip top deck of the TC3 prevents shifting and sliding of cargo and the movement of empty pallets among themselves, even in a humid environment.

Patented welding geometry of the TC3 pallet ensures high load-bearing capacity and a long lifespan.

Top and bottom deck of the TC3 pallet are hygienic and closed without external rib structures, allowing for easy manual and machine cleaning.

Connections of the pallet blocks with the pallet runners and the pallet deck are reinforced, minimizing breakage at these critical points.

Intelligent design of the TC3 pallet block provides enhanced grip for wrapping and stretch films.

Pallet runners of the TC3 are chamfered on both sides for manipulation equipment.

Description

Grey industrial pallet type TC3 (1200 x 1000 x H 160 mm) with anti-slip top deck - suitable for food products. Designed with 3 pallet runners lengthwise, closed bottom blocks, and reinforced ribs on the underside of the runners. The top and bottom deck of the TC3 pallet are entirely smooth and closed without external rib structures or edges. The top deck is fully equipped with a Palgrip anti-slip surface. Static load capacity is 7500 kg, dynamic load capacity is 1500 kg, and in pallet racks, it is 1250 kg.



Alternatieve artikelen

