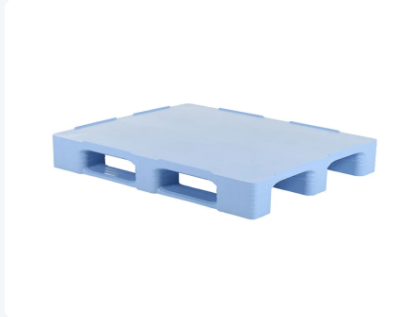




# Industrial pallet - TC3 - 1200 x 1000 mm (with rims)



## Product specifications

Uitwendig (LxBxH)	1200 x 1000 x 160 mm
Dynamic load capacity	1500 kg kg
Material	HDPE
Article number	87035341
Weight (kg)	21,5 kg
Temperature range	-30°C to +40°C, briefly up to +90°C
Color	Blue
Static load capacity	7500 kg kg
Edge height	7 mm mm
Load capacity in racks	1250 kg

## Properties

TC pallets runners are chamfered on both edges

Connections of the pallet chocks to the runners and the pallet surface are extra reinforced. Breakage at these sensitive points is thus reduced to a minimum

Intelligent design of the pallet chock ensures better grip of wrapping and stretch film

Raised rims around the TC3 prevent the load sliding off and mutual sliding of empty pallets

The TC pallet's patented weld geometry guarantees a high load capacity and long lifetime

Top and bottom pallet surface are completely smooth and unperforated without external rib structures

Very high load capacity that is upgradable to 1750 kg in pallet racks using reinforcing sections: on request

## Description

Fully enclosed plastic pallet in size 1200 x 1000 x H160 mm. Equipped with 3 pallet runners lengthwise and raised edges all around (7 mm) on the pallet deck. The raised edges prevent slipping of cargo and sliding of empty pallets. The TC3 is made of food-grade plastic. The pallet is completely smooth and hygienic, making it extremely suitable for food handling. Both the underside of the blocks and the pallet runners are smooth and closed, without rib structures. Also, the top and bottom of the pallet deck are completely smooth and closed, without external rib structures, preventing dirt from entering. The runners are equipped with reinforcement ribs. The connections of the pallet blocks with the pallet runners and with the pallet deck are extra reinforced, minimizing breakage at these sensitive points. The pallet is easy to clean.



## Alternatieve artikelen

