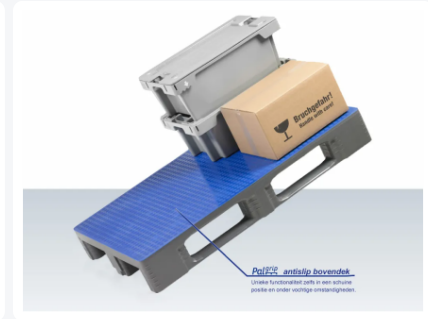
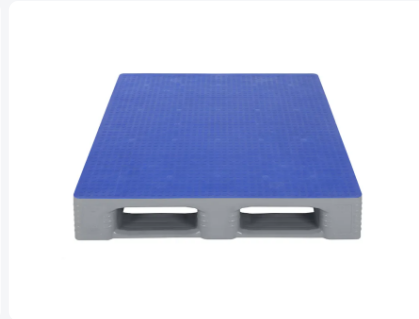
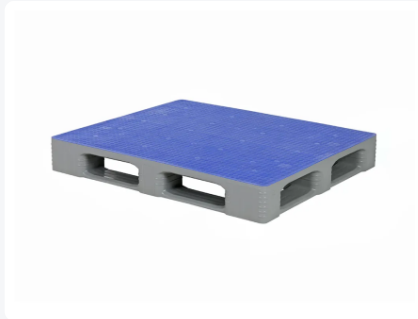




Industrial pallet - TC3-5 - 1200 x 1000 mm - with Anti-slip top deck - grey



Product specifications

Uitwendig (LxBxH)	1200 x 1000 x 160 mm
Dynamic load capacity	1500 kg kg
Material	HDPE
Article number	87039899
Weight (kg)	23,5 kg
Temperature range	-30°C to +40°C, briefly up to +90°C
Color	Grey
Static load capacity	7500 kg kg
Load capacity in racks	1250 kg

Properties

The anti-slip strips prevent loads sliding off and mutual sliding of empty pallets

Connections of the pallet chocks to the runners and the pallet surface are extra reinforced. Breakage at these sensitive points is thus reduced to a minimum

Top and bottom pallet surface are completely smooth and unperforated without external rib structures

Intelligent design of the pallet chock ensures better grip of wrapping and stretch film

Raised rims around the TC3-5 prevent the load sliding off and mutual sliding of empty pallets

TC3-5 runners are chamfered on both edges

The TC pallet's patented weld geometry guarantees a high load capacity and long lifetime

Description

Gray industrial pallet type TC3-5 (1200 x 1000 x H 160 mm) with non-slip top deck - suitable for foodstuffs. Equipped with 3 pallet runners longitudinally and 2 pallet runners transversely, closed bottom blocks and runners on the underside with reinforcing ribs. The top and bottom deck of the TC3-5 pallet are completely smooth and closed without external rib structures, without edges. The top deck is fully equipped with a Palgrip non-slip surface. Static load capacity is 7500 kg, dynamic 1500 kg, and in pallet racking 1250 kg.



Alternatieve artikelen

