

Article number: INZ.64.1-2.1



# Insert bin 1/2 - LIGHT - 356 x 277 x H 99 mm



## Product specifications

Uitwendig (LxBxH)	355 x 276 x 85 mm
Inwendig (LxBxH)	340 x 261 x 79 mm
Capacity	6.8 liter liter
Handles	Internal grab rims
Sidewalls	Closed
Material	PP
Article number	INZ.64.1-2.1
Weight (kg)	0,4 kg
Temperature range	-30°C to +80°C
Color	Grey
Bottom	Closed
European Article Number	7424904162139

## Properties

Usable as an insert bin in Euronorm 600 x 400 mm stacking bin, from an external height of 120 mm

Insert bins may be stacked together

Insert bins may be subdivided variously

## Description

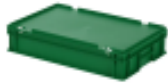
Food-grade plastic insert bin. Type LIGHT in size 355 x 276 x H 85 mm. Using insert bins allows for easy compartmentalization in Euro-standard stacking bins of 600 x 400 mm. Two insert bins of size 355 x 276 x H 85 mm fit into these stacking bins. These insert bins are suitable for use in 600 x 400 mm stacking bins with an external height starting from 120 mm. They are not suitable for stacking bins measuring 400 x 300 mm or smaller. Insert bins are available in various sizes and can be combined in Euro-standard stacking bins. This allows you to create a layout that suits the products you want to store. No assembly tools are required to create a compartmentalized layout with insert bins. Simply place the insert bins into the stacking bin. The layout is flexible and can be changed at any time. Insert bins, type LIGHT, have a recess in each corner, making them easy to remove. These insert bins are also used in cabinets and drawers, keeping your items organized and easily locatable. Insert bins can be stacked together, both small bins on large ones and large bins on small ones.



## Matching accessories



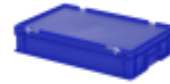
30.612.DB.10



30.612.DB.8



30.612.DB.4



30.612.DB.3

## Alternatieve artikelen



30.612.GDH.1



10.3.930.2