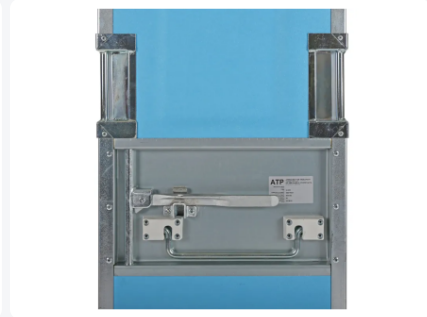


Article number: 92.H.340



# Isulated container - passive - 340 litre Euronorm



## Product specifications

Uitwendig (LxBxH)	555 x 775 x 1600 mm
Inwendig (LxBxH)	410 x 610 x 1340 mm
Capacity	340 liter liter
Handles	Two handles on each side of the door and one hinged wire handle on door
Article number	92.H.340
Weight (kg)	92 kg
Temperature range	Interior: -80°C to +130°C / Exterior: -40°C to +70°C
Color	Blue

## Properties

**Euronorm internal size 600 x 400 mm (usable); also suitable for beer and soft drink crates**

**Insulated with PU foam filling**

**Insulated container is provided with central door locking**

**Door hook on top of container to retain open door**

**Insulated container is provided with two rigid casters and two swivel castors, with galvanised housings and plastic wheels Ø 125 mm with PU tread.**

## Description

Mobile insulation container (555 x 775 x H 1600 mm - 340 liters) in a passive, exclusively insulating design. The internal dimensions of the insulation container are 610 x 410 mm. This allows for precisely fitting a row of stackable Euro norm containers sized 600 x 400 mm in the insulation container. It means that containers and crates with the Euro norm size 600 x 400 mm, complete with content, can be effectively chilled and practically transported in the insulation container. The insulation container is equipped with 2 fixed wheels and 2 lockable swivel wheels in a galvanized version with wheels Ø 125 mm and a PU tread. The door is fitted with a central locking mechanism with a two-point closure. Due to its excellent insulation, the temperature of the contents remains at the desired level for an extended period. The use of cooling elements can further enhance performance. A particularly robust container series that has proven its qualities in practice.



## Alternatieve artikelen



66.C.180.RK



66.SC.360.RK