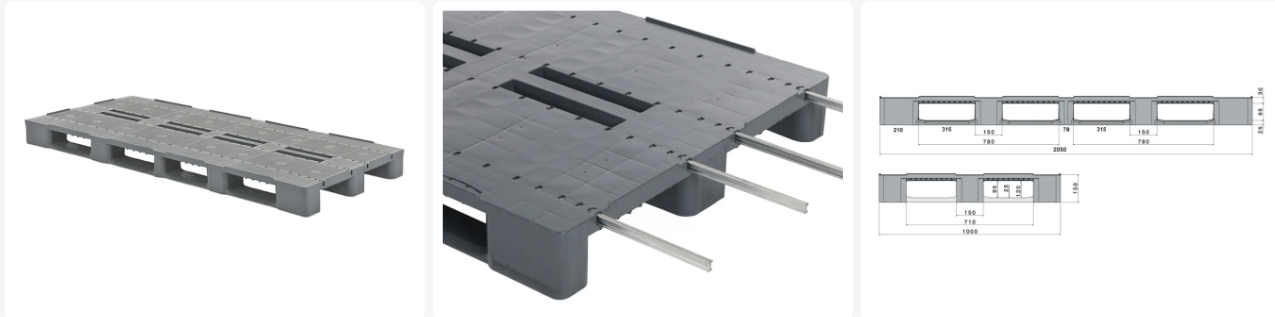


Article number: 83229801.DUOL1



Plastic pallet - CS3-DUO - 2050 x 1000 mm - with rims - open runners



Product specifications

Uitwendig (LxBxH)	2050 x 1000 x 150 mm
Dynamic load capacity	1000 kg kg
Material	Recycled ECO-HDPE
Article number	83229801.DUOL1
Weight (kg)	27,5 kg
Temperature range	-30°C to +40°C, briefly up to +90°C
Color	Grey
Static load capacity	5000 kg kg
Edge height	7 mm mm

Properties

The CS3 features a mostly closed pallet deck.

Thanks to the unique material mix of homogeneous HDPE plastics, the CS3 is a pallet of high-quality plastic at a favorable price.

The CS3 offers high stability due to its unique material composition and construction. Optional welded pallet runners increase the strength and impact resistance of the pallet.

The CS3 has a high load capacity.

With a standard weight of 15.1 kg and a height of 150 mm, the CS3 pallet is lightweight and with the dimensions of standardized wooden pallets. This simplifies mixed applications.

Description

Plastic large-format pallet (2050 x 1000 x H 150 mm) type CS3-DUO ECO in ECO regranulate. Based on two pallets of type CS3 ECO, which are sawn and then durably welded together. Equipped with 3 longitudinal pallet runners, bottom blocks, and open pallet runners (ribbed), with raised edges all around (7 mm). The top deck is standardly provided with 4 steel reinforcement profiles longitudinally. Static load capacity is 5000 kg and dynamic load capacity is 1000 kg. Maximum dynamic load of 1000 kg with evenly distributed load and with wide fork position of the forklift. Also available in a version with closed, hygienic pallet runners on the bottom. Also available without edges on the top deck. Various organizations use DUO pallets with full satisfaction.

Alternatieve artikelen

