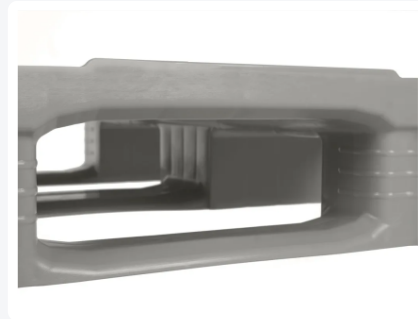




# Plastic pallet - TC1-DUO - 1550 x 1200 mm (with rims - 5 runners)



## Product specifications

Uitwendig (LxBxH)	1550 x 1200 x 160 mm
Dynamic load capacity	1500 kg kg
Material	HDPE
Article number	87065881.DUO
Weight (kg)	36 kg
Temperature range	-30°C to +40°C, briefly up to +90°C
Color	Grey
Static load capacity	7500 kg kg
Edge height	7 mm mm

## Properties

The TC1-DUO is based on the design of the TC1 pallet

The TC1-DUO pallet has a high load capacity thanks to its six runners and is thus the ideal solution for large loads

## Description

Plastic large-format pallet (1550 x 1200 x H 160 mm) type TC1-DUO - suitable for foodstuffs. Based on two pallets of the TC1 type, which are then sustainably fused. Equipped with 5 longitudinal pallet runners, closed bottom blocks. The top and bottom pallet decks of the TC1-DUO are completely smooth and closed without external rib structures, with raised edges all around (7 mm). Static load capacity is 7500 kg, dynamic load capacity is 1500 kg. Maximum dynamic load of 1500 kg with evenly distributed load and with wide fork position of the forklift. Various organizations use DUO pallets with full satisfaction.



## Alternatieve artikelen

