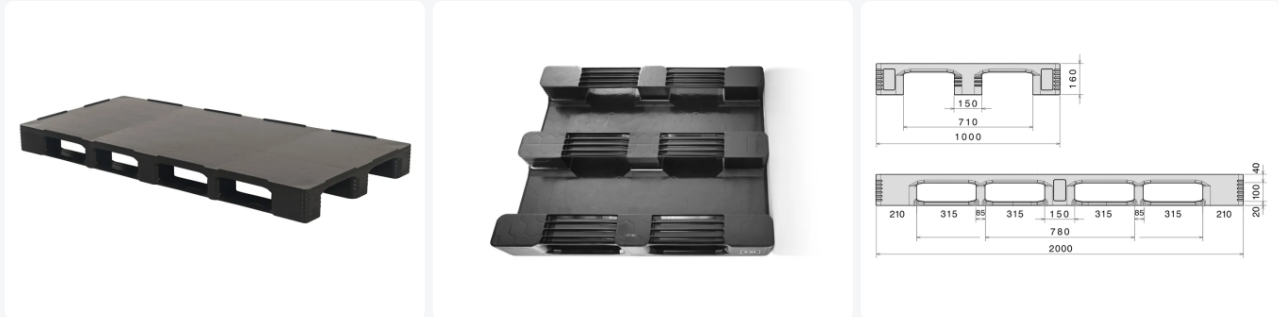


Article number: 87035241.DUOL1



Plastic pallet - TC3-DUO ECO - 2000 x 1000 mm (with rims)



Product specifications

Uitwendig (LxBxH)	2000 x 1000 x 160 mm
Dynamic load capacity	1000 kg kg
Material	Recycled HDPE
Article number	87035241.DUOL1
Weight (kg)	38 kg
Temperature range	-30°C to +40°C, briefly up to +90°C
Color	Black
Static load capacity	7500 kg kg
Edge height	7 mm mm

Properties

TC pallets runners are chamfered on both edges

Connections of the pallet chocks to the runners and the pallet surface are extra reinforced. Breakage at these sensitive points is thus reduced to a minimum

Intelligent design of the pallet chock ensures better grip of wrapping and stretch film

Raised rims around the TC3 prevent the load sliding off and mutual sliding of empty pallets

The TC pallet's patented weld geometry guarantees a high load capacity and long lifetime

Top and bottom pallet surface are completely smooth and unperforated without external rib structures

Very high load capacity that is upgradable to 1500 kg dynamic using reinforcing sections: on request

Description

Large-format plastic pallet (2000 x 1000 x H 160 mm) type TC3-Duo ECO. Based on two pallets of the TC3 Eco type, which are then sustainably welded together. Equipped with 3 pallet runners longitudinally, closed bottom blocks. The top and bottom deck of the TC3-Duo ECO pallet are completely smooth and closed without external rib structures, with raised edges all around (7 mm). Static load capacity is 7500 kg, dynamic 1250 kg. Maximum dynamic load of 1250 kg with evenly distributed load and with wide fork position of the forklift. Various organizations use DUO pallets with full satisfaction.

Alternatieve artikelen

