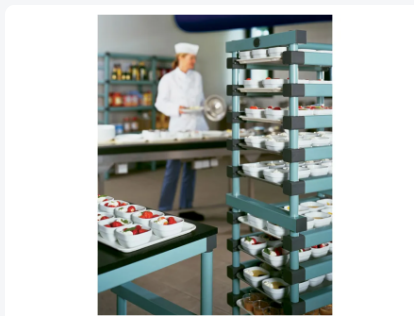
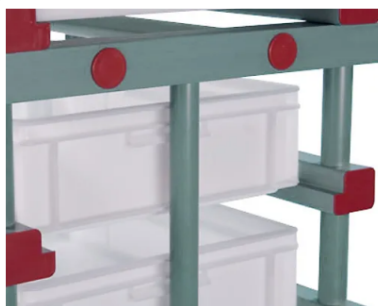


Artikelnummer: KRRERE12



Plastic platter trolley - 12 slots (Gastronorm)



Product specifications

External dimensions (L x
W x H) 470 x 610 x 1580 mm

Temperature range -40°C to +80°C

Color Green

Material PVC

Properties

The bin trolley is provided with four plastic swivel castors with plastic wheel Ø 125 mm with PU tread, two wheels braked, with stainless steel fixing materials

With plastic rear tube, so that the bins at the back cannot slide out of the trolley

Plastic platter trolley will be delivered without the platters

Description

Plastic tray trolley (470 x 610 x H 1580 mm), with 12 slots for Gastronorm trays 325 x 530 x H 20 mm. The tray trolley is equipped with 4 plastic swivel castors with plastic wheel Ø 125 mm with PU tread, 2 of which are braked, with stainless steel fasteners. Other sizes and configurations available on request.

