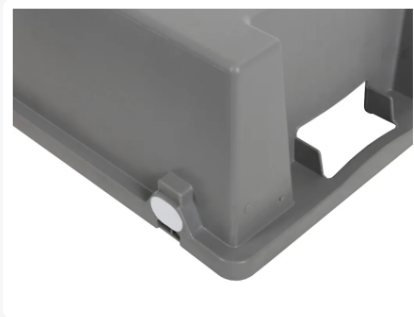




Stacking nestable bin - 600 x 400 x H 300 mm - closed



Product specifications Properties

Uitwendig (LxBxH) 600 x 400 x 300 mm

Capacity 50 liter liter

Handles Open (two openings)

Sidewalls Closed

Material PP

Article number 3603.750.512

Weight (kg) 2,6 kg

Temperature range -30°C to +80°C

Color Grey

Bottom Closed

MARS bins are stackable and nestable.

Upper edge of MARS stacking nestable bins is a hollow section and thus very stable.

Description

The MARS series introduces a versatile and durable stackable-nestable container, measuring 600 x 400 x H 300 mm with a capacity of 50 liters. These containers are designed to meet the highest food safety standards, featuring closed side walls and a closed bottom, making them suitable for food storage. The open handles facilitate the handling and transportation of the containers.

A notable feature of the MARS container is its upper edge in the form of a closed tube. This specific design significantly enhances the strength, stability, and hygiene of the containers. The seamless, closed tube prevents dirt accumulation and simplifies cleaning, which is crucial for use in the food industry.

These containers are extensively used in the food industry, especially in the fish sector, due to their hygienic properties and robustness. However, the MARS containers have also proven successful in other sectors, thanks to their sturdiness and their ability to meet various storage and transportation needs.



Matching accessories



Alternatieve artikelen