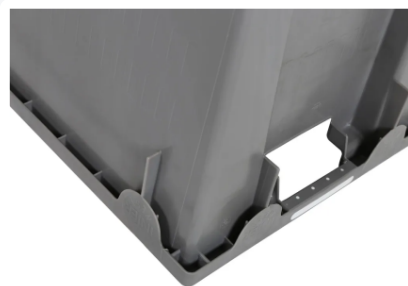




Stacking nestable bin - 600 x 400 x H 400 mm - closed



Product specifications Properties

Uitwendig (LxBxH) 600 x 400 x 400 mm

Capacity 70 liter liter

Handles Open (two openings)

Sidewalls Closed

Material HDPE

Article number 3644.750.512

Weight (kg) 3,1 kg

Temperature range -30°C to +80°C

Color Grey

Bottom Closed

MARS bins are stackable and nestable.

Description

The MARS series introduces a robust and efficient stackable-nestable container, measuring 600 x 400 x H 400 mm with a capacity of 70 liters. These containers are designed according to strict food safety standards, featuring closed side walls and a closed bottom, making them suitable for food storage. The open handles facilitate the handling and transportation of the containers.

A notable feature of the MARS container is the upper edge in the form of a closed tube. This specific construction significantly enhances the strength, stability, and hygiene of the containers. The seamless, closed tube prevents dirt accumulation and simplifies cleaning, which is vital for use in the food industry.

These containers are extensively used in the food industry, especially in the fish sector, due to their hygienic properties and durability. However, the MARS containers have proven to be a successful choice in other industries as well, thanks to their sturdiness and their ability to meet various storage and transportation needs.



Matching accessories

